

Overview of CORTEX DECODER®

Code's **CortexDecoder®** is a fast, reliable set of integrated barcode decoding tools and algorithms, that provide a secure and reliable software-based decoding solution without sacrificing speed or privacy.



Or



Available integrated EHR Licensing or Embedded, Mobile, and Web-based SDKs

Our CortexDecoder makes it easy to integrate world-class scanning and decoding into any business solution, from consumer-level mobile and web apps to vital custom Electronic Health Record (EHR) applications, including all leading EHR programs; Epic, Meditech, Cerner, and Allscripts. CortexDecoder allows thousands of customers worldwide to incorporate the best-in-class scanning capabilities into their business solutions.

Flexible Licensing Agreements

Our flexible licensing agreements allow you to customize your decoding solution to whatever your business needs:

Offline Licensing Make *unlimited secure scans and decodes* of 40+ Barcode Symbolologies, without data ever leaving your device and/or local environment making this the most secure and private mode of scanning available on the market.

Online Licensing Also allows *unlimited secure scans and decodes* of 40+ types, and utilize additional features like accurate license management, device tracking, usage and performance analytics, and additional features on our roadmap.

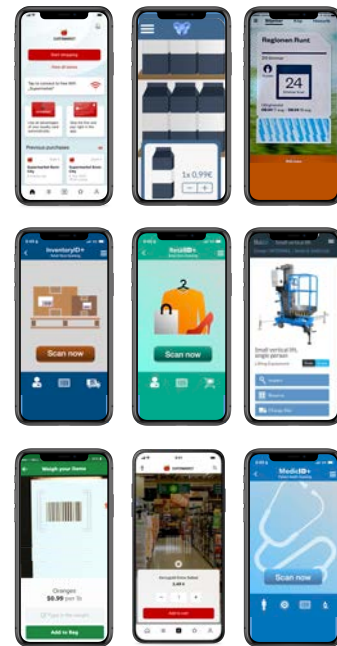


Figure 1: Examples of customer built custom apps using Code's CortexScan SDKs.

Applications: Customers all over the world have taken advantage of our CortexDecoder SDKs to build custom apps that offer secure, sophisticated and speedy scanning.

Features and Benefits

No Minimum License Requirements

1 or 1000 licenses, our no limit licensing can help your business grow at your pace, no matter what your needs are.

No usage caps

Scan one, scan all! We don't limit the number of scans you can complete, allowing your business to continue to grow.

40+ symbologies

CortexDecoder is capable of scanning code types used across a wide variety of industries.

Flexible OS portability

Engineered for nearly any OS & device, from low-cost smart phones to high-end custom imaging hardware, CortexDecoder is highly flexible.

Near Zero-Miss Accuracy

Designed and perfected over 20+ years, CortexDecoder has no problem reading even compromised or challenging codes.

Up to 6-times faster scanning

Efficient decoding algorithms and onboard processing allow faster scanning, and more business each day.

Unrivaled professional support

With hundreds of years of combined experience, our technical service team work hard to make your emergency, their emergency, and get you taken care of.

Online vs. Offline Pricing

Data and analytics are a large part of the future, and we believe that today is the time to prepare for that future. Our pricing reflects this belief, encouraging your secure and safe usage of data by offering it via lower cost licensing pricing. Alternatively, when security and privacy are more vital than savings, we allow offline licensing for your complete anonymity.

Online Licensing

- Internet access required – To provide insightful data and business insights, including device and license usage, these devices must have limited secure access to the web
- Active license counts & usage – Quickly and easily receive current license & device usage stats so you never overpay.
- Device level analytics & detail – Knowing which individual devices are used most frequently along with other info allows you to keep equipment fully functional and accounted for at a moment's notice.

Offline Licensing

- Ultimate privacy = no data transfer – As a completely disconnected license, there is never data transferred off the device keeping your data private.
- Highest possible device security – Without internet access security issues are dramatically reduced to near zero chance of malicious access possible.
- Data always 100% contained – Able to decode onboard, and not needing nor being online, your data never moves outside the app you are using unless you say so.

Features	Online Licensing	Offline Licensing
No-Limit License Requirements		✓
Unlimited # of Licenses		✓
No Usage Caps/Scan Limits		✓
40+ Symbologies		✓
Flexible OS portability includes iOS, Android, Windows, Linux		✓
Near Zero-Miss Scan Reliability		✓
Unrivaled Professional Support		✓
Pricing	\$	\$\$\$
Internet access required	✓	
Active license counts & usage	✓	
Device level analytics & detail	✓	
Ultimate privacy = no data transfer		✓
Highest possible device security		✓
Data always 100% contained		✓

Online Licensing Data Collected

The following data can be collected and sent, in 12-hour intervals, by each device (with an Online License) to ensure the amount of data being transferred has no impact on your network. The information is encrypted using TLS and does not contain any personal identity information (PII) or scan data from your barcodes.

- Device ID
- Device IP address
- Customer ID
- License Type
- License Expiration
- CortexDecoder Version #
- App ID
- App Version #
- OS Type
- OS Version #
- Hardware Model
- Time Stamp

Online Licensing Privacy & Data Protections

- Anonymized device analytics
- One direction data push into cloud
- No data is downloaded or saved to devices
- No collection of barcode data or images
- Secure HTTPS TLS encryption to Amazon API gateway
- No collection of any Personally Identifiable Information (PII)

Currently Available OS and Integrations

- EHR Integration for Epic Rover v.9.8.1 or higher
- iOS SDK
- Android SDK
- Xamarin SDK

Future Online Licensing Data Collection Plans

- Code will be adding additional data capabilities and analytic reporting into CortexDecoder
- Each future update will seek to improve the product and services provided
- We regularly incorporate customer feedback into our update roadmap, so if you have specific needs - please let us know.

Data Reporting Sneak Peak

- See Appendix to this document on final page

Interested in test driving our tech? Or looking for more specific information on our software?
Contact us at info@codecorp.com or [801-495-2200](tel:801-495-2200).

Appendix

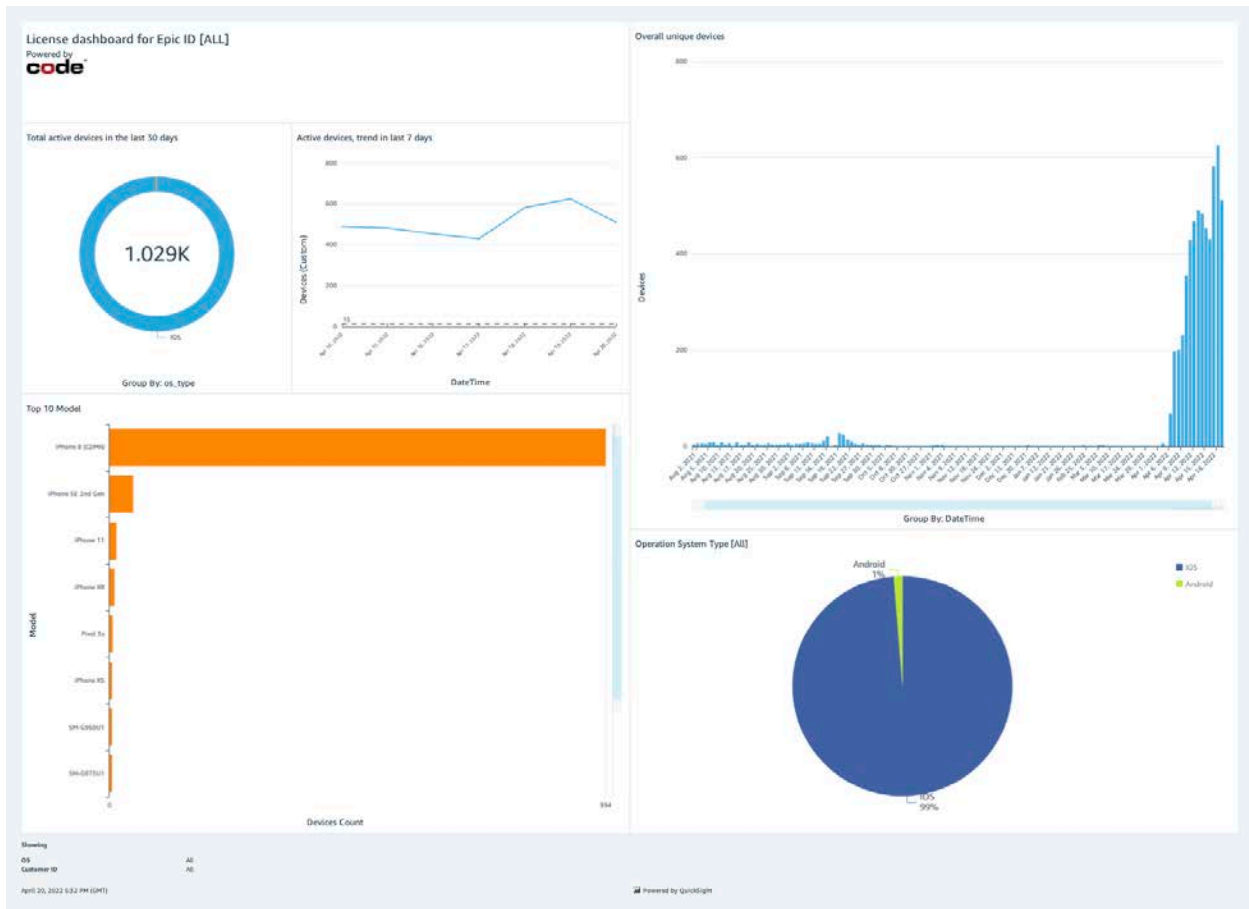


Figure 2: Main Dashboard sample of an Online License of CortexDecoder for Epic Rover with sample metrics.

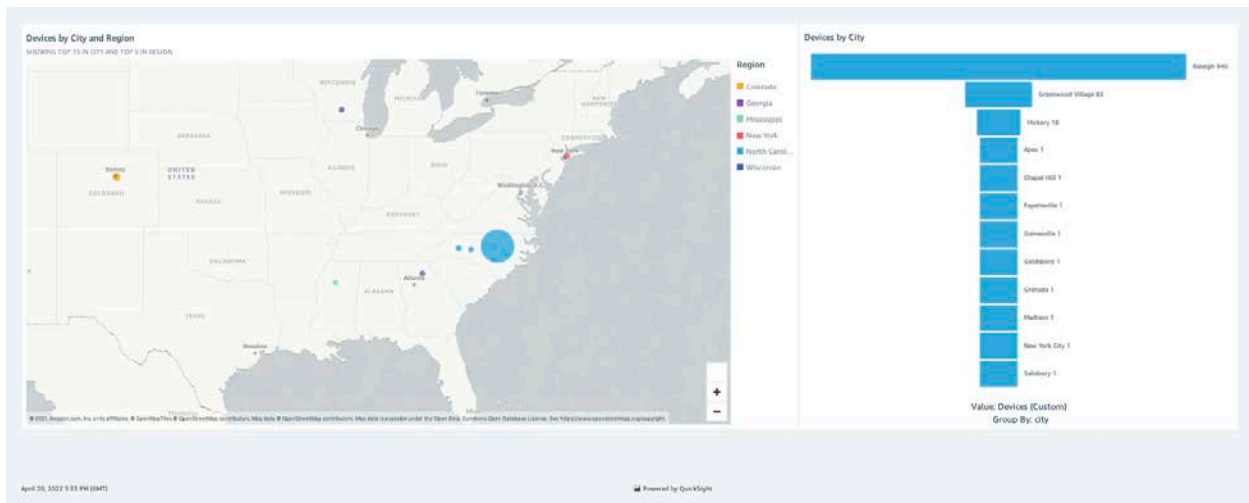


Figure 3: Geographic Dashboard sample of an Online License of CortexDecoder for Epic Rover with sample metrics.